



**Bennington County Regional Commission
Bennington, Vermont**

The BCRC was created by the seventeen towns and villages it serves and will work with and behalf of those municipalities to build strong, resilient communities to foster economic prosperity, and promote a high quality of life for the residents of the region.

Emergency Management Planning

Assistance is available to all our towns for:

Local Emergency Management Plans

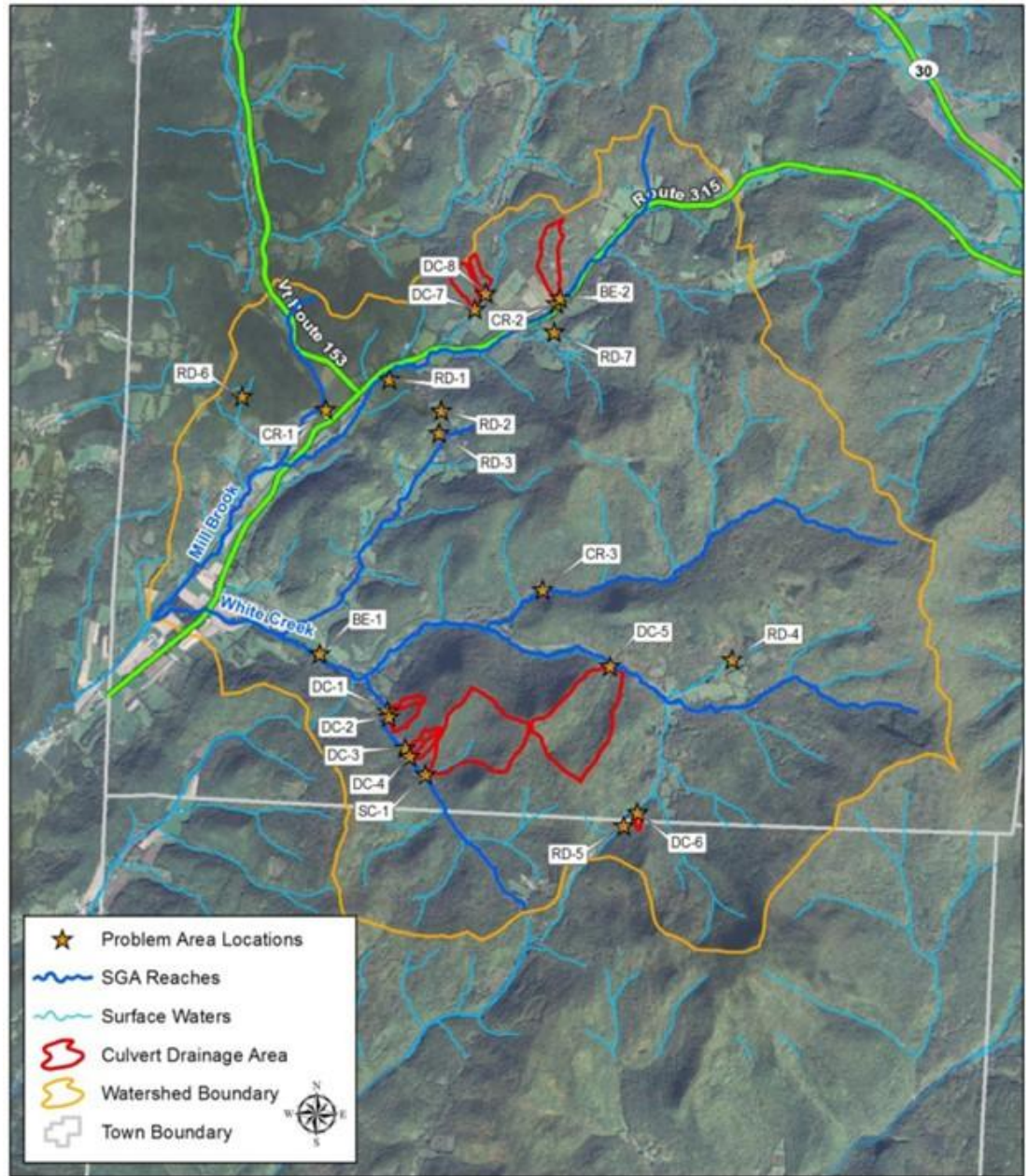
Hazard Mitigation Plans

Flood Hazard Bylaws

River Corridor Bylaws

FEMA Local Liaison Assistance

Stormwater Master Plans



Fitzgerald
Environmental
Associates, LLC
18 Severance Green, Suite 203
Colchester, VT 05446
Telephone: 802.876.7778
www.fitzgeraldenvironmental.com

**Town of Rupert
Stormwater Master Plan**

**Stormwater Problem Area
Locator Map**

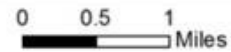


Figure 2

Date: Sept 17, 2015
Drawn: JHB

Transportation Planning

Better Roads Grant Program

Structures Grant Program

Municipal Road General Permit Support

Grant In Aid Program

Bridge and Culvert Inventories

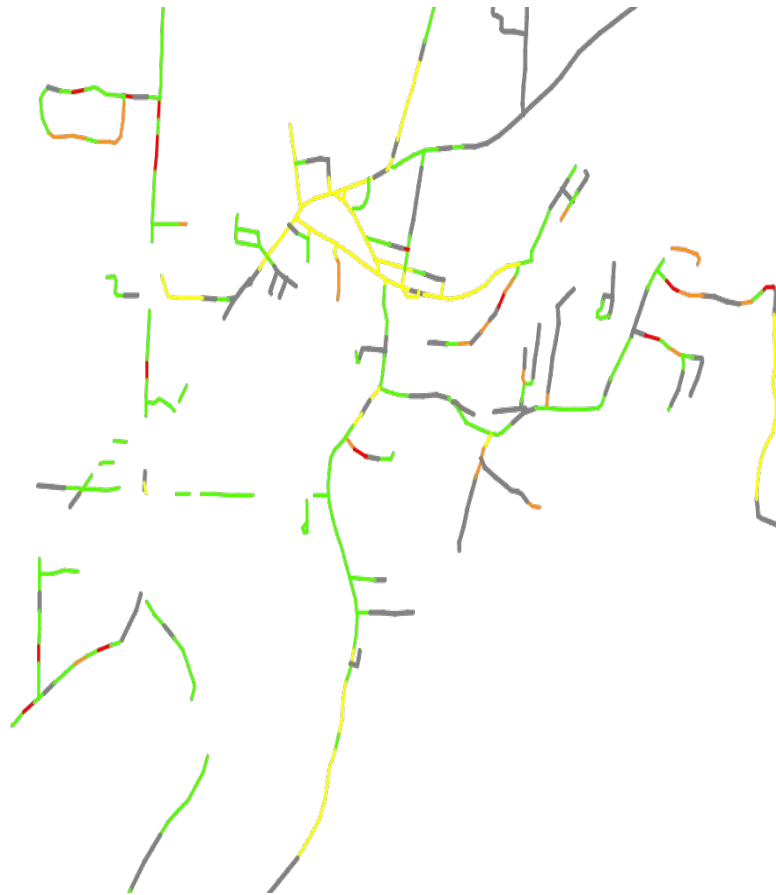
Better Roads Program



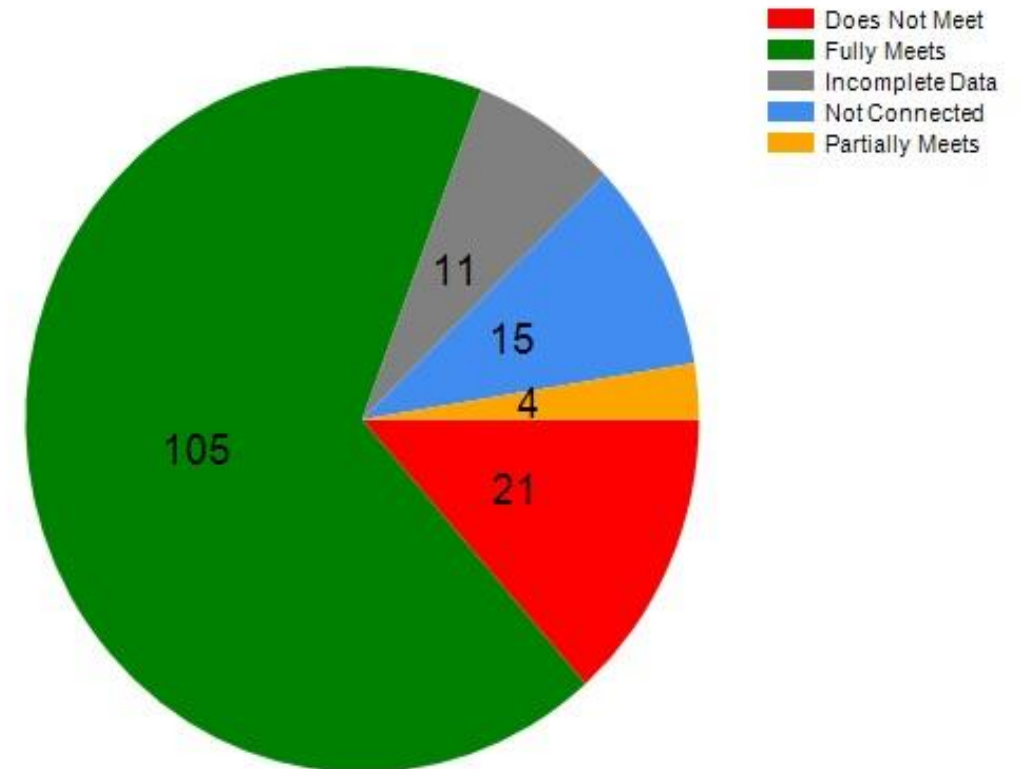
Structures Grant Program



Municipal Road General Permit Support Road Erosion Inventories



Road Segment Meeting Standards



Grants In Aid Program



Grants In Aid Program



Brownfields Redevelopment Program

- Brownfields are real property, the expansion, redevelopment, or reuse of which may be complicated by the presence or potential presence of a hazardous substance, pollutant or contaminant.
- Cleaning up and reinvesting in these properties protects the environment, reduces blight, and takes development pressure off green space and working lands.

Lauzon Machine and Engineering



Former Bennington High School – Benn Hi

