



Climate Smart Community Resilience Forum

By: Phyllicia J. Moore – South Zone District Conservationist

FARM PRODUCTION AND CONSERVATION
FSA | NRCS | RMA | Business Center

About NRCS

- Established in 1935 as the Soil Conservation Service (SCS), the NRCS was born out of a dire need to address the severe soil erosion caused by the Dust Bowl. Over the decades, its mandate expanded to encompass water quality, wildlife habitats, and broader ecological concerns. Renamed the Natural Resource Conservation Service in 1994, the agency has consistently championed the cause of conservation, working hand-in-hand with farmers, ranchers, and forest landowners to implement sustainable land management practices.

Our Mission, Vision, & Driving Force

Mission

We deliver conservation solutions so agricultural producers and forest land users can protect natural resources and feed a growing world



Driving Force

Helping People Help the Land



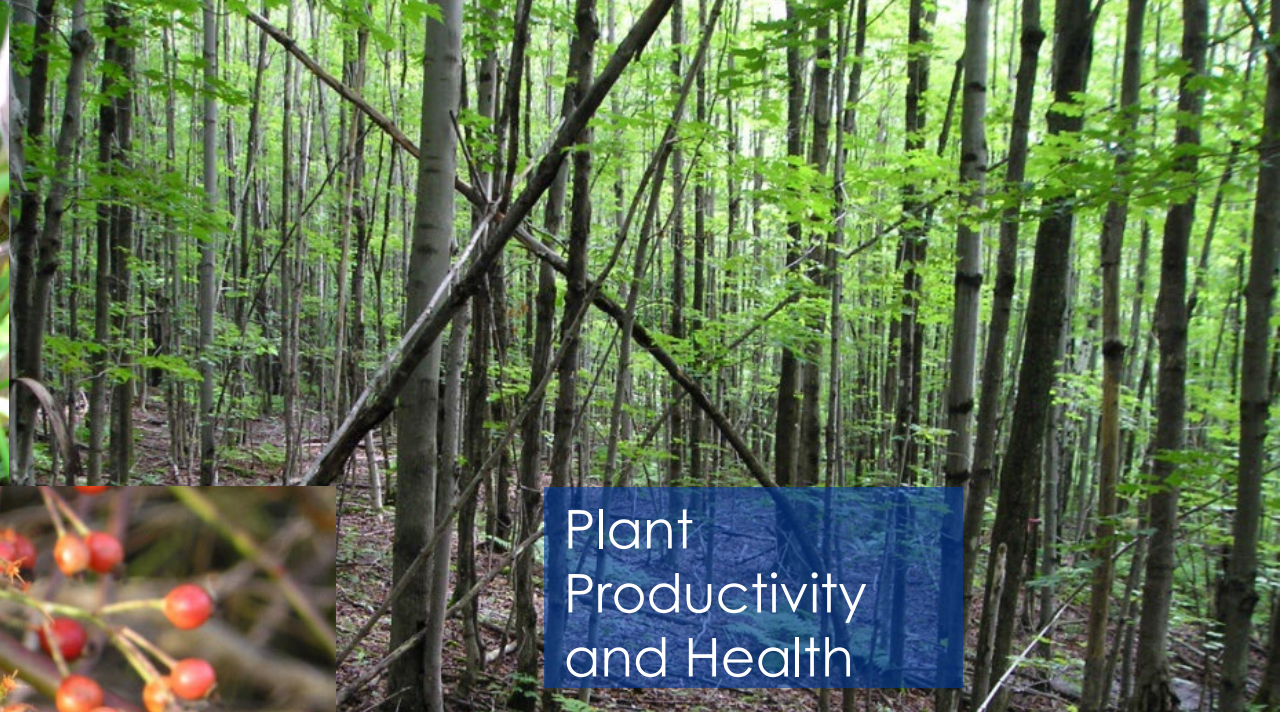
Strategic Goals

Goal 1: Champion **climate-smart** conservation practices with private landowners resulting in improved soil health, enhanced water quality, and sustainable ecosystems





Inadequate Habitat



Plant Productivity and Health



Invasive Plants



Soil Erosion



Water Quality



Our agency's task is to help you conserve, manage, and improve the natural resources on your land:

Soil



Water



Air



Plants



Animals



Energy

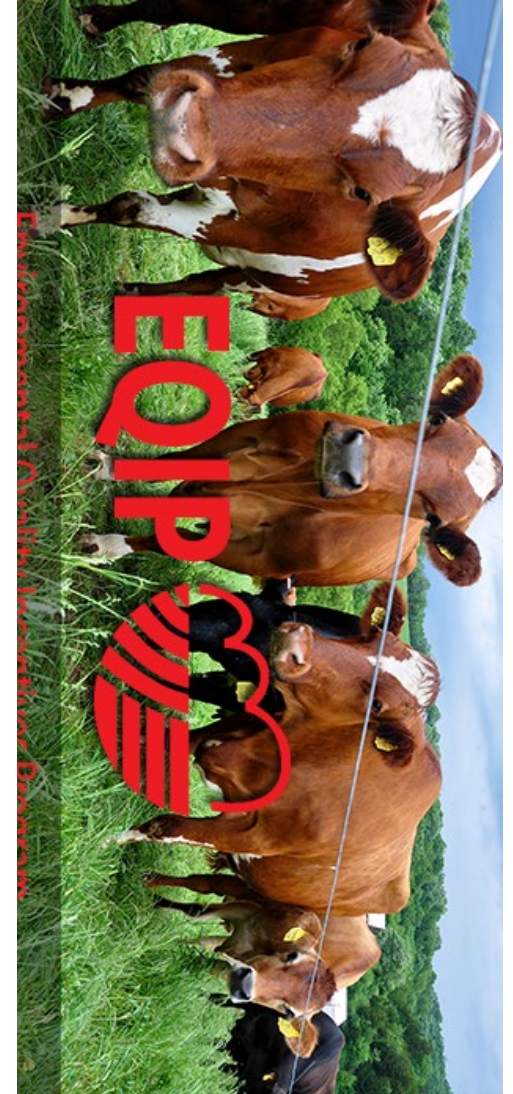


Environmental Quality Incentives Program (EQIP)

- One-on-one help and financial assistance to plan and implement improvements, or what NRCS calls conservation practices.
- Develop a conservation plan that meets your goals and vision, while conserving natural resources.
- NRCS offers about 200 unique practices designed for working farms, ranches, and forests.
- NRCS financial assistance can cover part of the costs of implementing conservation practices.

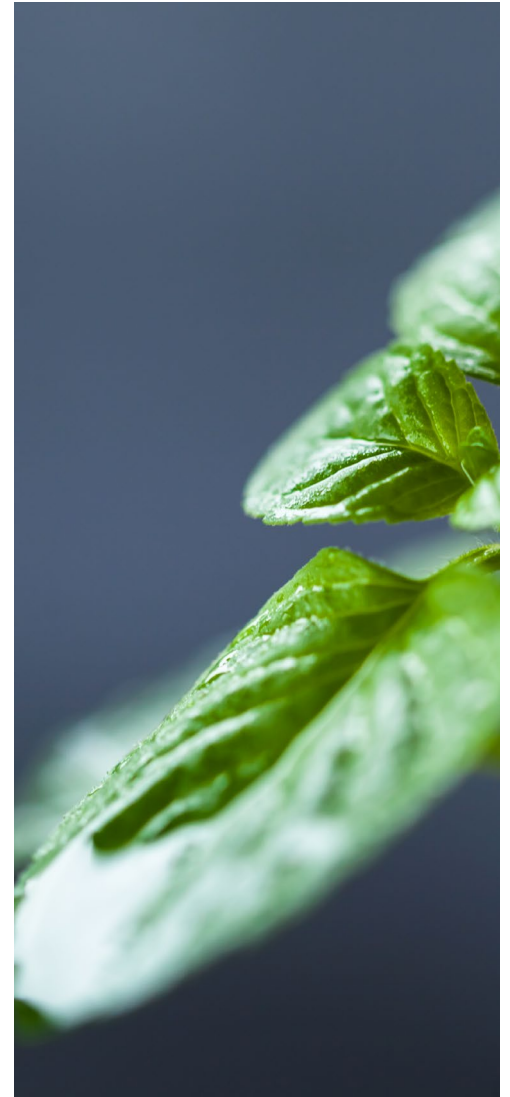
Eligibility:

- Land: Cropland, hayland, rangeland, pastureland, non-industrial private forestland, other farm and ranch lands, environmentally sensitive areas (No acre minimum)
- Applicants: Agricultural producers, owners of non-industrial private forestland, Indian Tribes, those with an interest in agriculture or forestry operations, and water management entities
- Other Requirements: Records should be current for proposed land and indicate the applicant controls the eligible land. The applicant should meet AGI and payment limitation provisions. The land should follow wetland policy requirements



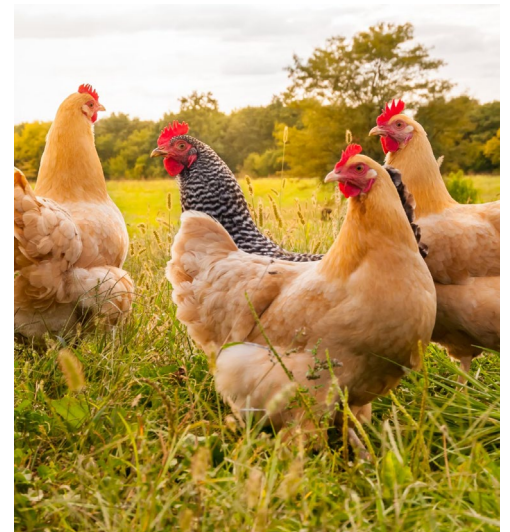
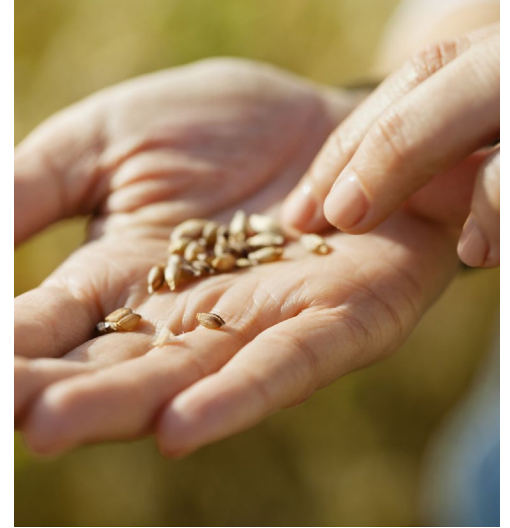
Conservation Stewardship Program (CSP)

- CSP addresses various resource concerns including *soil quality, soil erosion, water quality, water quantity, air quality, plant resources, and animal resources as well as energy.*
- CSP provides two possible types of payments through 5-year contracts:
 - Annual payments for installing new conservation activities and maintaining existing practices
 - Supplemental payments for meeting specific resources thresholds at the time of your application and assessment.
 - NRCS may provide a minimum annual payment of \$1,500 in any year the total contract amount is below a rate NRCS determines equitable based upon the effort required by a participant to meet contract requirements.
- Stewardship Threshold Eligibility:
 - Met at least 2 Priority Resource Concerns when they apply.
 - Must also agree to Meet or Exceed the stewardship threshold for at least one additional priority resource concern by the end of the contract.



Regional Conservation Partnership Program (RCPP)

- The Regional Conservation Partnership Program (RCPP) promotes coordination between NRCS and its partners to deliver conservation assistance to producers and landowners.
- NRCS assists producers through partnership agreements and through program contracts or easement agreements.

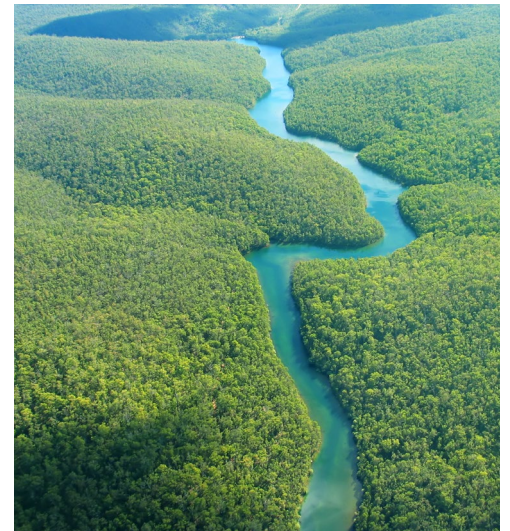


Emergency Watershed Protection Program (EWPP)

- The EWP Program is a recovery effort aimed at relieving imminent hazards to life and property caused by floods, fires, windstorms, and other natural disasters. All projects must have a project sponsor.
- NRCS may bear up to 75 percent of the eligible construction cost of emergency measures (90 percent within limited-resource areas as identified by the U.S. Census data). The remaining costs must come from local sources and can be in the form of cash or in-kind services.

Eligibility

- Public and private landowners are eligible for assistance, but must be represented by a project sponsor.
- Sponsors include legal subdivisions of the State, such as a city, county, general improvement district, conservation district, or any Native American tribe or tribal organization.



Natural Resources Conservation Service

Climate-Smart Agriculture and Forestry (CSAF) Mitigation Activities List^[1] FY2023



| Climate Change Mitigation Practice Categories | Code | Conservation Practice Standard Name ^[2] (units) | CSP Enhancement Code | Conservation Stewardship Program (CSP) Bundle and Enhancement Activity |
|---|------|--|----------------------|--|
| | | | B000BFF1 | Buffer Bundle#1* |
| | | | B000CPL24 | Cropland soil health management system* |
| | | | B000CPL25 | Climate smart advanced soil health* |
| | 327 | Conservation Cover (acres) | E327A | Conservation cover for pollinators and beneficial insects |
| | | | E327B | Establish Monarch butterfly habitat |
| | 328 | Conservation Crop Rotation (acres) | E328A | Resource conserving crop rotation |
| | | | E328B | Improved resource conserving crop rotation |
| | | | E328E | Soil health crop rotation |
| | | | E328F | Modifications to improve soil health and increase soil organic matter |
| | | | E328G | Crop rotation on recently converted CRP grass/legume cover for soil organic matter improvement |
| | | | E328N | Intercropping to improve soil health |
| | | | E328O | Perennial grain crop conservation rotation |
| | 329 | Residue and Tillage Management, No Till (acres) | E329A | No till to reduce soil erosion |
| | | | E329B | No till to reduce tillage induced particulate matter |
| | | | E329C | No till to increase plant-available moisture |
| | | | E329D | No till system to increase soil health and soil organic matter content |
| | | | E329E | No till to reduce energy |
| | 332 | Contour Buffer Strips (acres) | | None Available |
| | | | E340A | Cover crop to reduce soil erosion |
| | | | E340B | Intensive cover cropping to increase soil health and soil organic matter content |

CSAF activities are divided into the following mitigation categories:

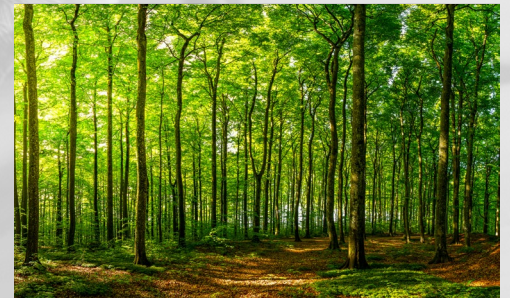
- **Soil Health** – Reducing emissions and enhancing soil carbon sequestration.
- **Nitrogen Management** – Implementing the 4Rs of nitrogen management and reducing nitrous oxide, a potent greenhouse gas. The 4Rs are Right Source, Right Rate, Right Time and Right Place.
- **Livestock Partnership** – Reducing potent methane emissions from manure.
- **Grazing and Pasture** – Reducing emissions and building soil carbon stocks in grazing systems.
- **Agroforestry, Forestry and Upland Wildlife Habitat** – Building carbon stocks in perennial biomass and soils.

CSAF activities are divided into the following mitigation categories cont.:

- **Restoration of Disturbed Lands** – Improving the quality of previously mined or degraded lands to increase soil and perennial biomass carbon stocks.
- **Energy, Combustion and Electricity Efficiency** – Reducing emissions from agricultural operations and infrastructure through energy and fuel efficiency and system and operational improvements.
- **Wetlands** – Returning a wetland and its functions to a close approximation of its original condition as it existed prior to disturbance on a former or degraded wetland site.
- **Rice** – Reducing methane emissions from rice fields by minimizing methane production during the growing season.

Top CSAF Mitigation Activities

- 528 Prescribed Grazing (acres)
- 345 Residue and Tillage Management, Reduced Till (acres)
- 512 Pasture and Hay Planting (acres)
- 391 Riparian Forest Buffer (acres)
- 612 Tree/Shrub Establishment (acres)
- 340 Cover Crop (acres)
- 329 Residue and Tillage Management, No Till (acres)



Contact Us

Vermont NRCS Offices

State Office

(802) 951-6796
356 Mountain View Drive, Suite 105
Colchester, Vermont 05446

Berlin

(802) 828-4493
617 Comstock Road, Suite 1
Berlin, VT 05602

Brattleboro

(802) 689-3037
28 Vernon Street, Suite 332
Brattleboro, VT 05301

Middlebury

(802) 388-6748
68 Catamount Park, Suite B
Middlebury, VT 05753

Morrisville

(802) 888-4935
109 Professional Drive, Suite 2
Morrisville, VT 05661

Newport

(802) 334-6090
59 Waterfront Plaza, Suite 12
Newport, VT 05855

Rutland

(802) 775-8034
170 South Main Street, Suite 4
Rutland, VT 05701

St. Albans

(802) 527-1296
50 South Main Street, Suite B-20
St. Albans, VT 05478

St. Johnsbury

(802) 748-2641
481 Summer Street, Suite 202
St. Johnsbury, VT 05819

White River Junction

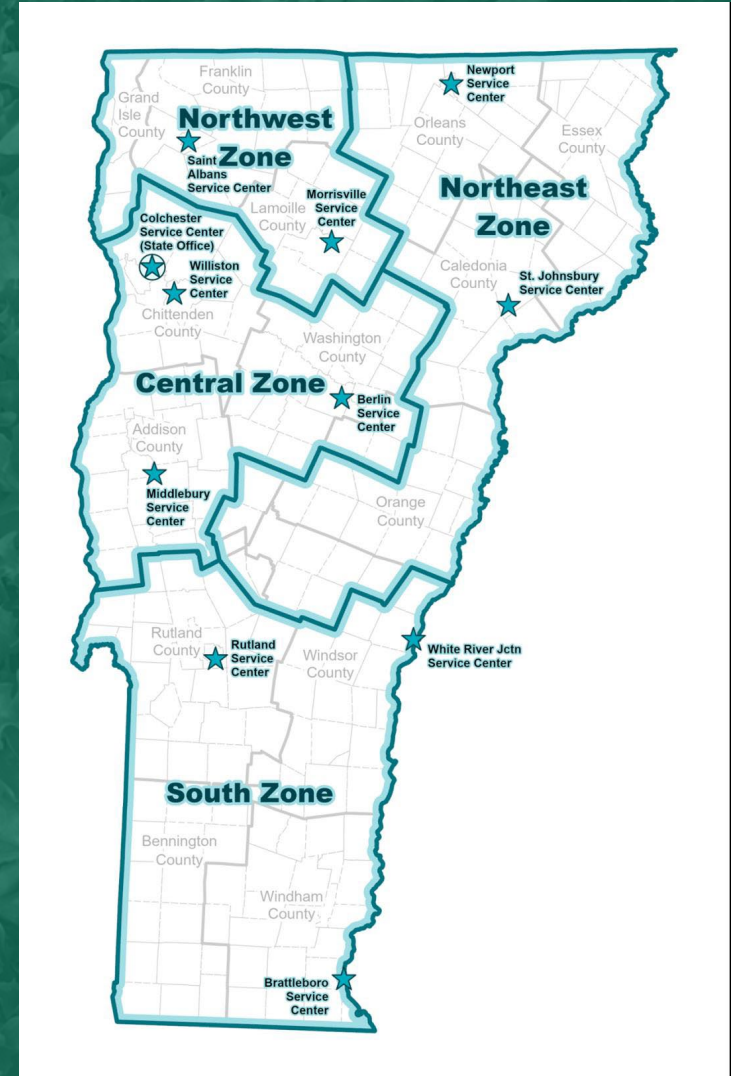
(802) 295-7942
28 Farmvu Drive
White River Junction, VT 05001

Williston

(802) 288-8155
94 Harvest Lane
Suite 203
Williston, VT 05495



USDA is an equal opportunity employer, provider and lender.



Contact Us

| Name | Position | Ext. | Email |
|--------------------|--------------------------|------|---------------------------------|
| Phylicia Moore | District Conservationist | 118 | Phylicia.Moore@usda.gov |
| Olivia Carlson | Soil Conservationist | 113 | Olivia.Carlson@usda.gov |
| Joseph Tillman | Soil Conservationist | 116 | Joseph.Tillman@usda.gov |
| Luke Scannell | Soil Conservationist | | Luke.Scannell@usda.gov |
| Leslie Wright | Civil Engineer | 123 | Leslie.wright@usda.gov |
| Michelle Smith | VACD Planner | 119 | michelle.l.smith@vt.nacdnet.net |
| Bill Forbes | ACES Employee | 129 | william.forbes@vt.nacdnet.net |
| Keith Hartline | ACES Employee | 127 | keith.hartline@usda.gov |
| Katherine Griffing | Program Assistant | 121 | katherine.griffing@usda.gov |

Rutland/Bennington

| Name | Position | Phone Number | Email |
|--------------------|--|--------------------------|------------------------------|
| Hilary Solomon | Poultney-Mettowee District Manager | (802) 287-8339 | pmnr cd@gmail.com |
| Jennifer Alexander | Ag Water Quality Specialist/NM Planner | (802) 558-6470 | jennifer@pmnr cd.org |
| Sadie Brown | Nursery and Stormwater Program Manager | (802) 287-6606 | sadie@pmnr cd.org |
| Amelia Bruss | Ag Water Quality Specialist | (802) 373-5766 | amelia@pmnr cd.org |
| Michael Fernandez | Bennington District Manager | (802) 775-8034, ext. 132 | michael@bccdvt.org |
| Nanci McGuire | Rutland NRC D District Manager | (802) 774-8034, ext. 117 | Nanci.Mcguire@vt.nacdnet.net |

QUESTIONS???????



USDA is an equal opportunity provider, employer, and lender.